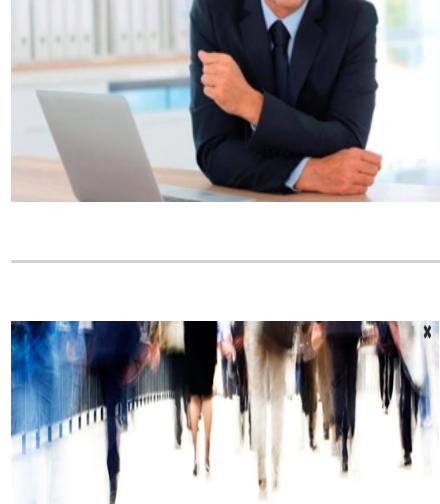




CONTENTS AND HIGHLIGHTS



DBA - Doctor of Business Administration

1st PHASE - APPLICATIONS OPEN
FROM FEBRUARY 15 TO MAY 2



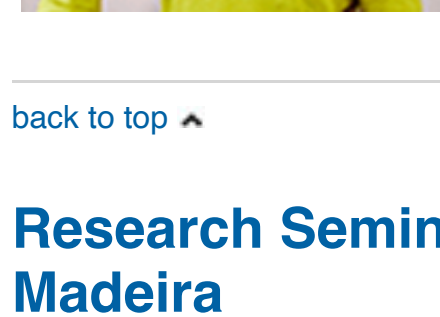
PhD PROGRAM APPLICATION

1st PHASE BRU-IUL offers PhD Programs in Economics, Finance, Management and Tourism Management. APPLICATIONS OPEN FROM FEBRUARY 15 TO MAY 2.

Agenda

Research Seminar Series (Track 2) - Céline Nauges

SHARE [f](#) [in](#) [e](#)

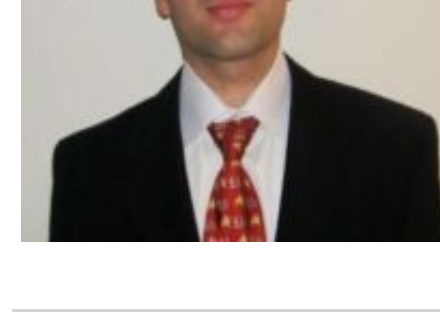


Céline Nauges, Research director at INRA (French Institute for Research in Agriculture) and member of the Toulouse School of Economics (France), will present the paper "On the design of water markets in the presence of risk aversion" in the Research Seminar Series at BRU-IUL on the **15th April 2016**, at 14h30 in Auditorium ONE02.

[back to top](#)

Research Seminar Series (Track 2) - João Madeira

SHARE [f](#) [in](#) [e](#)



João Madeira, from the University of York, will present the paper "The effect of FOMC dissent on financial markets" in the Research Seminar Series at BRU-IUL on the **29th April 2016**, at 14h30 in Auditorium ONE02.

Calendar of BRU PhD Thesis Defense - April

SHARE [f](#) [in](#) [e](#)

- **6th April 2016 - 14h30**

Ricardo Barradas
PhD in Economics
Title: " Essays on the Portuguese Economy: The Era of Financialisation ",
Room: B203

- **18th April 2016 - 09h00**

Ricardo Emanuel Sarmento Correia
PhD in Economics
Title: "Behavioural water resource Economics. Behavioural applications to water resources sector"
Room: TBC

I Conferência de Consultoria Organizacional

SHARE [f](#) [in](#) [e](#)



The I Conferência de Consultoria Organizacional will be held on 15th April 2016, at the Grande Auditório of ISCTE-IUL, Lisboa.

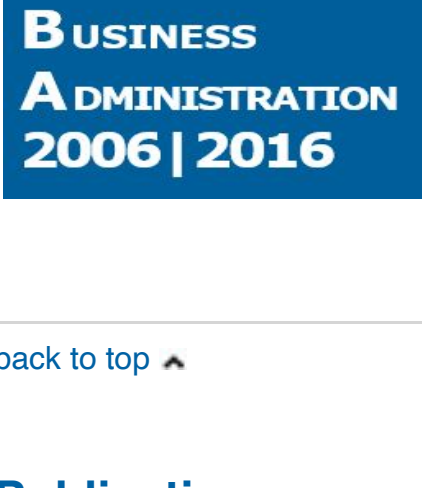
The I Conferência de Consultoria Organizacional is organized by the Master in Human Resources Management and Organizational Consulting, of the ISCTE Business School, in collaboration with the BRU-IUL and APPOCO (Associação Portuguesa de Psicologia das Organizações e Comportamento Organizacional).

The Organizing Committee includes the researcher **Aristides Ferreira** from the Organizational Behavior & Human Resources Group of BRU-IUL.

For more information please visit the [website](#)

Conferência Projetos de Investimento Público em Portugal I 10 Anos DBA

SHARE [f](#) [in](#) [e](#)



The *Conferência Projetos de Investimento Público em Portugal: Lições do passado, perspetivas de futuro* will be held on the **11th April 2016 at 9h30** , on Auditorium B203 of ISCTE-IUL, Lisboa.

The conference is organized by the BRU-IUL.

To see the program please click [Here](#)

To register please send an email to dba.bru@iscte.pt ,with your name and contacts

Publications

New Publications

SHARE [f](#) [in](#) [e](#)

From the Economics Group:

- Horta,P. Lagoa, S. & **Martins, L.F.** 2016. [Unveiling investor-induced channels of financial contagion in the 2008 financial crisis using copulas](#). Quantitative Finance, 16(4):625-637. Scimago: Q1/Q2, ISI: Q4, ABS 3
- Carmona,G. & **Carvalho, L.** 2016. [Repeated two-person zero-sum games with unequal discounting and private monitoring](#). Journal of Mathematical Economics,63:131-138. Scimago: Q2, ISI: Q3, ABS 3

From the Organizational Behavior & Human Resources:

- **Ferreira, A.**, Rodrigues, R. & Ferreira, P.C. 2016. [Career interests of students in psychology specialties degrees: psychometric evidence and correlations with the RIASEC dimensions](#). International Journal for Educational and Vocational Guidance, 16(1):91-111. Scimago: Q1/Q3, ISI: Q3/Q4, ABS 1
- **Ferreira, A.** & Esteves, J.D. 2016. [Perceptions of time at work: Why the clock ticks differently for men and women when they are not working at work](#). Personnel Review. 45 (1), 29-50. Scimago: Q2, ISI: Q2/Q3, ABS 2
- Sieben, B., Braun, T. & **Ferreira, A.** 2016. [Reproduction of "Typical" gender roles in temporary organizations—No surprise for whom? The case of cooperative behaviors and their acknowledgement](#). Scandinavian Journal of Management. 32 (1), 52-62. Scimago: Q2, ISI: Q3, ABS 2

From the Research Methods

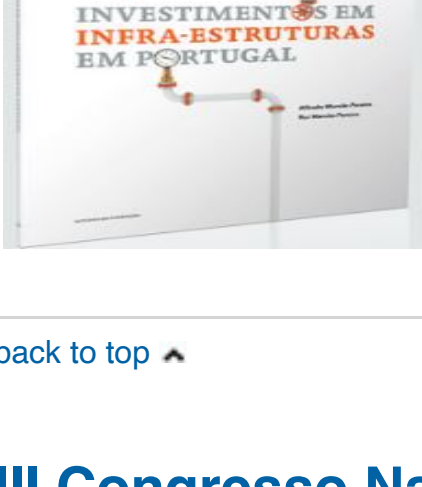
- Vieira, M.D.T, **Salgueiro, M.F.** & Smith, P.W.F 2016. [Impacts of Complex Sampling Designs on Latent Growth Curve Modelling](#). Journal of Applied Statistics, 43(7):1310-1321.Scimago: Q3, ISI: Q4, ABS 2
- Rama, M. C. R., Garcia, J. A., **Saraiva, M.** & Pires, A. R. 2016. [Influence of Quality on Employee Results: The Case of Rural Accommodations in Spain](#). Total Quality Management and Business Excellence. DOI:10.1080/14783363.2016.1150171. Scimago: Q2, ISI: Q2, ABS 2

[back to top](#)

News

Available: Book “Investimentos em Infraestruturas em Portugal

SHARE [f](#) [in](#) [e](#)

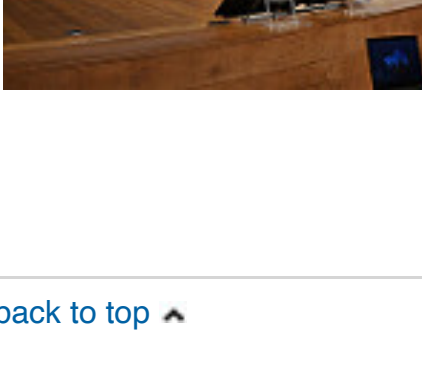


The book "Investimentos em Infraestruturas em Portugal" authored by **Alfredo Marvão Pereira** and Rui Marvão Pereira, was presented on the 10th March 2016, at the Salão Nobre da Faculdade de Economia da UNL, Nova School of Business and Economics.

[back to top](#)

III Congresso Nacional da Formação Profissional

SHARE [f](#) [in](#) [e](#)



The congress was held on the 31st March 2016, at the Grande Auditório of ISCTE-IUL, Lisboa.

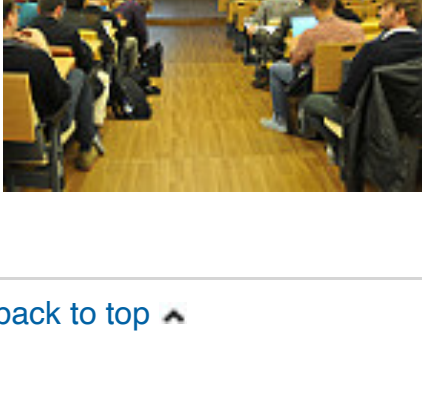
The *III Congresso Nacional da Formação Profissional* was organized by Forma-te, ISCTE-IUL, McDonald's and TAP Portugal.

The Organizing Committee included the researchers **António Caetano**, **Aristides Ferreira**, **Silvia Silva** and **Susana Santos**, from the Organizational Behavior & Human Resources Group of BRU-IUL.

To see the photos of the congress please click [HERE](#)

21st Spring Meeting of Young Economists

SHARE [f](#) [in](#) [e](#)



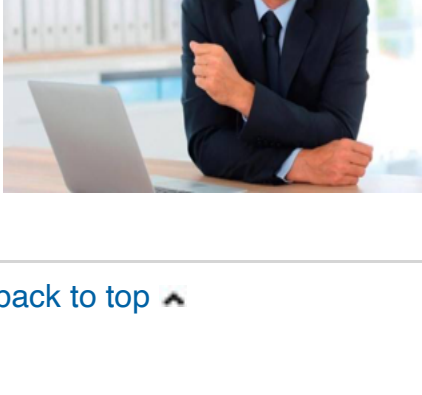
The 21st Spring Meeting of Young Economists (SMYE2016) was held in Lisbon, Portugal, between March 31 and April 2, 2016.

The conference was hosted by ISCTE- Instituto Universitário de Lisboa (ISCTE-IUL). The Local Organizing Committee included the researchers **Mónica Meireles** (Chairman), **Nádia Simões**, **Marta Silva** and **Ricardo Correia** from the Economics Group of BRU-IUL.

To see the photos of the event please click [HERE](#)

DBA - Doctor of Business Administration

SHARE [f](#) [in](#) [e](#)



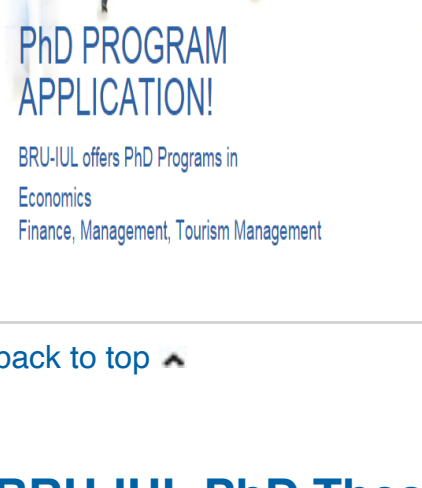
2016/2017

APPLICATIONS OPEN FROM FEBRUARY 15 TO MAY 2

For more information: dba.bru@iscte.pt

PhD PROGRAM APPLICATION

SHARE [f](#) [in](#) [e](#)



1st PHASE

BRU-IUL offers PhD Programs in Economics, Finance, Management and Tourism Management.

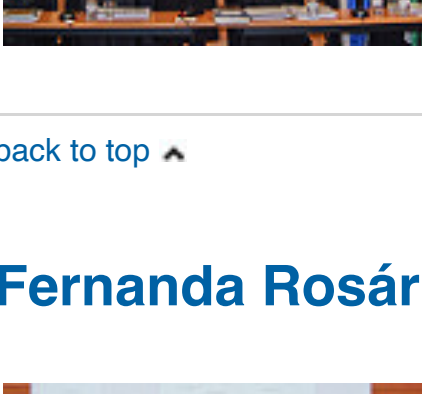
APPLICATIONS OPEN FROM FEBRUARY 15 TO MAY 2.

[back to top](#)

BRU-IUL PhD Thesis Defense

Ana Isabel Calado Silva Pinto

SHARE [f](#) [in](#) [e](#)



Ana Isabel Calado Silva Pinto

PhD in Accounting

Title: "The impact of procurement practices in the municipality auditing Market", took place at ISCTE-IUL on March 10th, 2016.

[back to top](#)

Fernanda Rosário Carneiro Silva

SHARE [f](#) [in](#) [e](#)



Fernanda Rosário Carneiro Silva

PhD in Management

Title: "Ser política: A dinâmica de construção da identidade de uma profissão", took place at ISCTE-IUL on March 22th, 2016.

[back to top](#)

