



22-26 May 2023

1st Training School on Nature and People in the NEXUS

The 1st Training School will take place at Iscte- Instituto Universitário de Lisboa, which is located in Lisbon.

How to Reach Iscte:

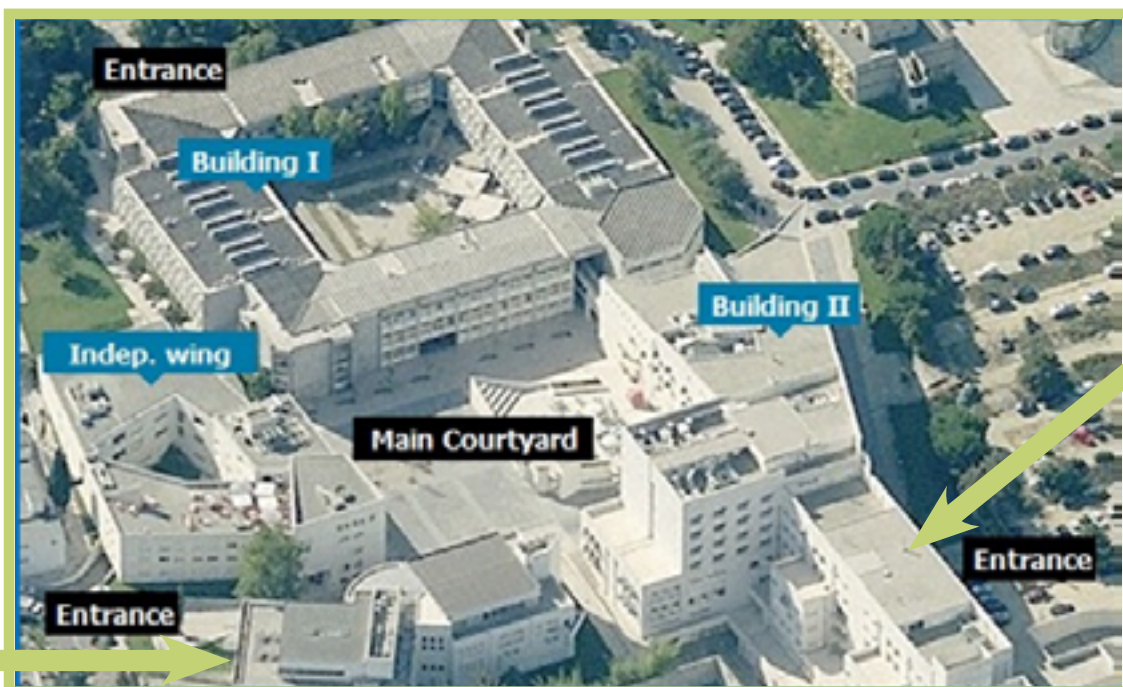
Full address

Iscte - Instituto Universitário de Lisboa
Av. das Forças Armadas,
1649-026 Lisboa-Portugal

Coordinates

Latitude: 38.748753

Longitude: -9.153692



MAP | Airport > Iscte



Flights

Since there are numerous airlines and flights from different cities across the globe to Lisbon airport (LIS), we have not arranged with a particular travel agency for flights to Lisbon. Good deals can be found online or through different airlines (e.g., EasyJet, Ryanair, TAP, Air France, British Airways, etc.).

Lisbon Airport is the main international gateway to Portugal. It is one of the few airports in Europe located inside a major city.

BUS

Bus N° 783: Portela - Aeroporto - Amoreiras

Bus N° 744: Marquês Pombal – Aeroporto – Moscavide

The trip takes about 30 minutes. Bus station: Av. Forças Armadas.



TAXI or UBER

To get to Iscte it is both simpler and faster to take a taxi.

There are two taxi stands within the perimeter of the airport, one at arrivals and the other at departures: we suggest you take one at the departures stand.

The trip takes about 10 minutes. Iscte is 10-15 minutes from city center (ex. Rossio) by car.

Underground / subway train

The Lisbon Airport has a Metro (subway) station with a direct line to the city centre. The 'Aeroporto – Saldanha' line takes you to downtown Lisbon in about 20 minutes. The campus area is in Entrecampos metro station. The Metro network will allow you to move around the city at ease. It is a quick and inexpensive way to get around, plus you'll get to see Lisbon's subway stations – each with its own theme and décor.

You must purchase the '7 Colinas' / 'Viva Viagem' electronic travel card, which you can then top up with balance for your journeys and can be used both for the Metro and for Carris (bus network):

7 Colinas / Viva Viagem electronic card: €0.50 (price in this moment)

Single Fare Price: €1.50 (price in this moment)

24h Network Pass: €6.45 (price in this moment)

<http://metro.transporteslisboa.pt/>

As the network diagram depicts, if you plan on taking the subway to get to **Iscte** you will need to change line:

- First, **red** line direction São Sebastião – (Aeroporto – Saldanha)
- Second, **yellow** line direction Odivelas – (Saldanha – Entre Campos)



Accommodation

Hotels

Lisbon have a variety of hotels with high quality.

5 stars *****



VIP Grand Lisboa Hotel & Spa*****

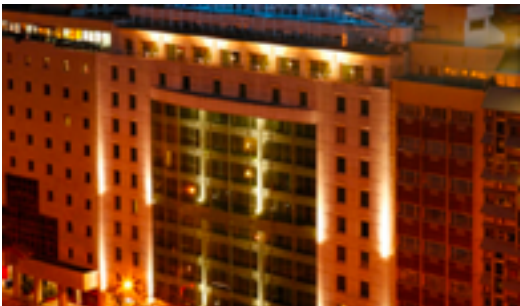
Address: Avenida 5 de Outubro, 197, 1050-054 Lisboa - Portugal

Phone: +351 210 435 000

Distance from Iscte: : 950 m or 11-minute walk

[website](#)

4 stars ****



VIP Executive Entrecampos Hotel & Conference****

Address: Avenida 5 de Outubro, 295, 1600-035, Lisboa, Portugal

Phone: +351 210 043 000

Distance from Iscte: 350 m or 4-minute walk

[website](#)



Hotel NH Lisboa Campo Grande****

Address: Campo Grande, 7 1700-087 Lisboa – Portugal

Phone: +351 21 7917600

Distance from Iscte: 450 m or 5-minute walk

[Website](#)



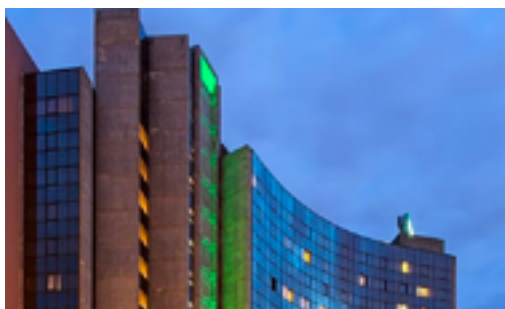
SANA Metropolitan Hotel****

Address: R. Soeiro Pereira Gomes 2, 1600-198 Lisboa

Phone: +351 21 798 2500

Distance from Iscte: 750 m or 10-minute walk

[Website](#)



Holiday Inn Lisbon - Continental****

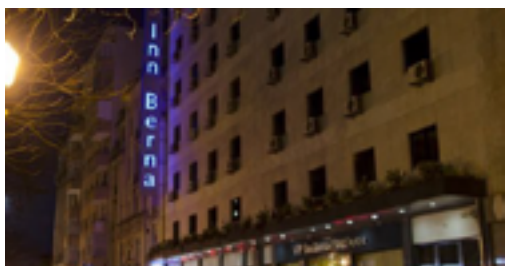
Address: Rua Laura Alves 9, Lisbon, Portugal

Phone: +351 21 004 6000

Distance from Iscte: 1000 m or 14-minute walk

[Website](#)

3 stars ***



Hotel VIP Inn Berna ***

Address: Av. Antonio de Serpa 13, Lisbon, 1069-199, Portugal

Phone: +351 21 781 4300

Distance from Iscte: 950 m or 11-minute walk

[Website](#)



VIP Executive Zurich Hotel ***

Address: Rua Ivone Silva, 18, 1050-124 Lisboa Portugal

Phone: +351 217 814 000

Distance from Iscte: 950 m or 12-minute walk

[Website](#)