

**bru**\_iscte

Business Research Unit

**2019**



**Director: Maria de Fátima Salgueiro**

**Annual  
Research Report**

<b>BRU-Iscte  The Research Unit</b>	3
<b>Welcome Address</b>	3
<b>Strategy and vision</b>	4
Bru-Iscte Graded Excellent by FCT	5
<b>Governance</b>	6
New Visit by our International Scientific Advisory Board (ISAB)	7
<b>BRU-Iscte   The Team</b>	8
<b>Research Groups</b>	8
<b>Visiting Researchers</b>	14
New Protocol with the Fulbright Foundation	15
<b>BRU-Iscte Administrative Staff</b>	16
<b>BRU-Iscte   Scientific Programmes &amp; Activities</b>	17
<b>Funding Sources</b>	17
<b>Advanced Training</b>	18
Research Fellowships	19
<b>Research Projects</b>	20
Empowering Researchers for Competitive Funding & Innovative Partnerships	20
BRU-Iscte wins Portugal 2020 support for internationalisation	20
3 new Erasmus + projects in the field of Organizational Behavior & Human Resources	20
COST Action “CHERN – China in Europe Research Network”	22
Other Research Partnerships	23
Funded research projects in 2019	24
<b>Publications, Awards &amp; Editorial Positions</b>	26
<b>Research Seminars Series</b>	28
<b>Events</b>	29
<b>Research Impact and Alignment with the Sustainable Development Goals (SDGs)</b>	32
<b>Overview of Scientific Outcomes</b>	34
<b>BRU-Iscte   Dissemination, Knowledge Transfer &amp; Outreach Activities</b>	35
<b>Dissemination of scientific activity &amp; knowledge transfer</b>	35
<b>BRU-Iscte in the media</b>	38
<b>Engaging with the public at large</b>	38
<b>BRU-Iscte   Key Figures 2019</b>	40
<b>BRU-Iscte   Appendices</b>	41

## BRU-Iscte | The Research Unit

The Business Research Unit (BRU-Iscte) is a **multidisciplinary research** unit set up in 1994, whose scope spans various Business areas. Researchers are mainly, but not exclusively, faculty from the Iscte Business School (IBS). IBS is accredited by AMBA and AACSB, in addition to being ranked in the Financial Times European Business Schools ranking, as well as in the Times Higher Education ranking. BRU-Iscte is accredited by the Fundação para a Ciência e a Tecnologia (FCT), the Portuguese National Research Agency, having been ranked as Excellent in the last FCT Evaluation. Research is funded by FCT core funding, by international and national competitive research grants, as well as by other public and private entities.

### Welcome Address

"Welcome to the Business Research Unit of Iscte. As the Director of the Unit, I am very proud of our researchers and scientific accomplishments! In 2019, our continuous efforts in publishing at the highest international standards, in training young promising researchers and in contributing to society via knowledge transfer and social impact activities were recognized by the FCT Evaluation panel in Social Sciences-Management. Over the next pages, I invite you to discover the highlights of this excellent and productive year."



**Maria de Fátima Salgueiro – Director of BRU-Iscte**



"BRU-Iscte is a reference in both the national and international research landscape. The year 2019 was a remarkable milestone. The rank Excellent in the last FCT Evaluation was a recognition of the sound and impactful research carried out by BRU-Iscte research team."

**Jonas Oliveira – Vice-Director of BRU-Iscte**

## Strategy and vision

In 2019, BRU-Iscte has kept focusing on the main goal of the Research Unit: to establish itself as a leading research centre in business and economics scientific areas, both in Portugal and in Europe.

### Our 3 Interweaving Pillars

#### Excellence in Research

- ▶ Develop and improve sound research in core Business areas that further advances the international scientific literature, namely by increasing the number of FT50, ABS4\*, ABS4, Q1 (Web of Science or Scimago) publications and international co-authorships
- ▶ Engage in innovative research projects in partnership with public and private organisations

#### World-class Doctoral Programmes

- ▶ Provide world-class Doctoral educational programmes that are able to attract top national and international students
- ▶ Contribute to advancing the scientific knowledge and training of junior researchers
- ▶ Develop the skills of professionals in the business world, specifically via our DBA programme

#### Engaging with Society

- ▶ Use our research capacity to answer the needs of managers and companies, thus developing solutions for specific corporate problems
- ▶ Share academic knowledge with the general population beyond academia
- ▶ Assess our research societal impact, specifically its alignment with the United Nations' Sustainable Development Goals (SDGs)

In 2019, BRU-Iscte strived to push forward its research at the highest international standards, providing a research-rich environment to achieve excellence and social impact. This effort was highlighted by the result of Unit's evaluation by FCT.



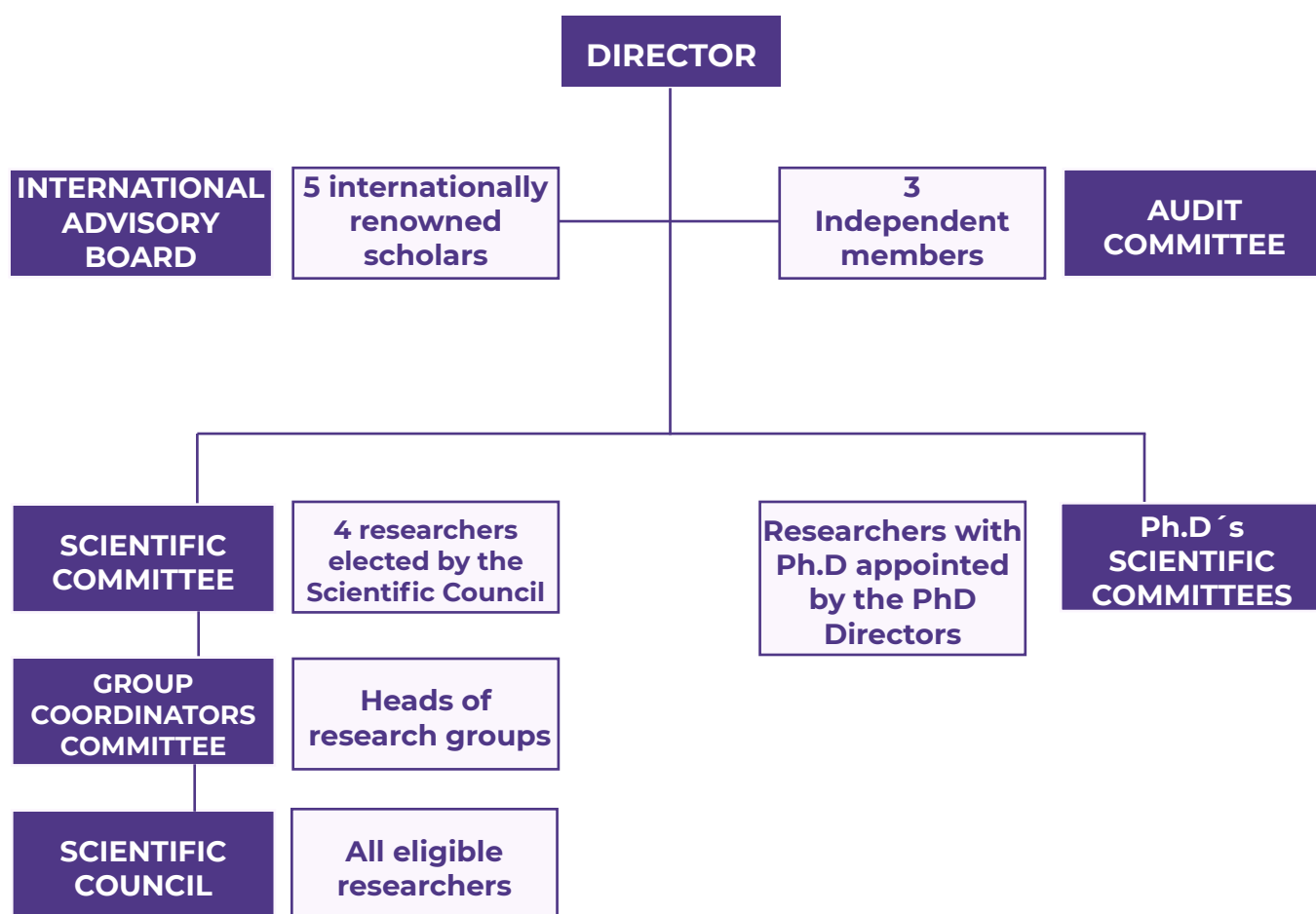
## BRU-Iscte Graded Excellent by FCT

The FCT (Portuguese National Funding Agency for Science, Research and Technology) regularly organises evaluation cycles of national R&D institutions. The evaluation system is based on periodic assessments carried out by panels of international experts.

The Business Research Unit has received the visit of the FCT Evaluation Panel on the 19<sup>th</sup> November 2019. The FCT international panel for "Social Sciences-Management" was chaired by Philip Dover (from Babson College) and evaluated 12 Portuguese research centres. The Business Research Unit was one of the two that received the highest grade "EXCELLENT". BRU was the center that obtained the most funding for the next funding cycle (2020-2023) and was allocated seven PhD Fellowships for that period.



## Governance



*BRU-Iscte's Organisational Chart in 2019*

## New Visit by our International Scientific Advisory Board (ISAB)

On November 29<sup>th</sup> BRU-Iscte welcomed the **2<sup>nd</sup> Visit of its International Scientific Advisory Board**, constituted in the previous year. The Board includes five members:

- **Fiona Steele**, Professor in Statistics and Deputy Head of Department, LSE - The London School of Economics and Political Sciences, UK
- **Jacqueline Coyle-Shapiro**, Professor of Organisational Behaviour, Department of Management, LSE - The London School of Economics and Political Sciences, UK
- **Simon Wolfe**, Head of Department of Banking and Finance and Director of the Centre for Digital Finance, Southampton Business School, University of Southampton
- **Stephen G. Hall**, Head of Division and Professor of Economics, University of Leicester, School of Business, UK
- **Xavier Castañer**, Department of Strategy, Globalization and Society, Université de Lausanne, Switzerland

The ISAB met the new Iscte Business School Dean, Prof. Maria João Cortinhal. In the Plenary Session, open to all BRU-Iscte researchers, the Director, Professor Maria de Fátima Salgueiro, presented the Unit's activity, goals and achievements in 2019 to all Board members present. Special attention was given to the recent FCT Evaluation Panel Visit.

This presentation was followed by an interactive discussion with BRU-Iscte's Scientific Committee, Research Group Coordinators and Directors of the Doctoral Programmes to review the Unit's progress in light of its strategic goals and challenges for the next funding cycle (2020-2023), and how these could inform the recommendations of the ISAB.



## BRU-Iscte | The Team

In 2019, BRU-Iscte comprised the following five research groups:

- Accounting, Marketing & Management;
- Data Analytics;
- Economics;
- Finance;
- Organizational Behavior & Human Resources.

At the end of 2019, BRU-Iscte's comprised a total of **125 members**, including **108** PhD holders. The Unit counted with **58 integrated members and 50 associated members**, as well as **17 research assistants**, mainly PhD students. Additionally, BRU-Iscte had the support of **5 administrative staff members**.

### Research Groups



#### Accounting, Marketing & Management

Integrated members: 20  
Associated members: 27  
Research assistants: 6



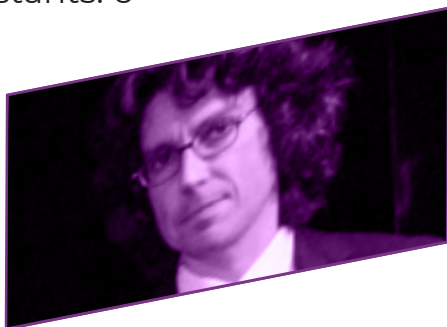
#### Data Analytics

Integrated members: 11  
Associated members: 8  
Research assistants: 1



#### Economics

Integrated members: 10  
Associated members: 7  
Research assistants: 3



#### Finance

Integrated members: 6  
Associated members: 5  
Research assistants: 1



#### Organizational Behavior & Human Resources

Integrated members: 11  
Associated members: 3  
Research assistants: 6



## Accounting, Marketing & Management Research Group

**Coordinator: Nelson António**



### Integrated Members



Ana Simaens



Fernando Ferreira



Helena Rodrigues



Ieva Meidute



Isabel Lourenço



João Guerreiro



Luís M. Martins



Mª Antónia Jesus



Marjan Jalali



Nebjosa Davcik



Nelson António



Paulo Bento



Pedro Falcão



Ralitz Nikolaeva



Ricardo Bilro



Ruben Barros



Rui Vinhas da Silva



Sandra Loureiro



Sofia Kalakou



Teresa Grilo

### Associated Members



Álvaro Rosa



Ana Isabel Lopes



Ana Lúcia Martins



Ana Brochado



Cláudio Pais



Daniela Langaro



Hélia Pereira



Ilídio Tomás



Inna Paiva



João Menezes



João Vílas Boas



Jonas Oliveira



J. Arménio Rego



José Moleiro



José Pedro Dionísio



Luis Pimentel



Margarida Oliveira



Mª C. Santos



Mª João Machado



Mª José Sousa



Marta Bicho



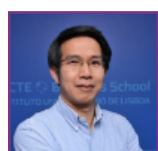
Paula Rodrigues



Paulo Dias



Rogério Serrasqueiro



Shaozhuang Ma



Susana Marques



Tânia Ramos



Tiago Rapaz

### Research Assistants



Dante Júnior



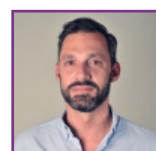
Filipa Pinto



Luís Pedro Miguel



Mónica Ferreira



Pedro Oliveira



Ricardo Pinto

**Note:** The researcher left the unit in August 2019.

## Data Analytics Research Group

**Coordinator: Paula Vicente**



### Integrated Members



Abdul Suleman



Ana Ferreira



Catarina Marques



Elizabeth Reis



Felipa Sampayo



José Dias Curto



José M.G. Dias



Fátima Salgueiro



Margarida Saraiva



Paula Vicente



Sónia Bentes

### Associated Members



Dália Nogueira



Graça Trindade



Margarida Cardoso



Gabriela Silva



Teresa Calapez



Nuno Ferreira



Pedro  
Ribeiro



Raul Laureano

### Research Assistants



Filipe Ramos



Nikolai Witulski

**Note:** The researcher left the unit in May 2019.

## Economics Research Group

**Coordinator: Joaquim Ramalho**



### Integrated Members



Alexandra Lopes



Emanuel Gasteiger



Joaquim Ramalho



Luis F. Martins



Catarina Palma



Marta Silva



Nádia Crespo



Nuno Crespo

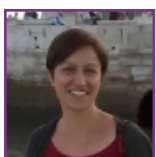


Sandro Mendonça

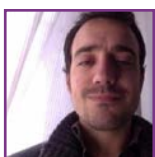


Thomas Greve

### Associated Members



Helena Soares



João Lopes Costa



Matteo Fragetta



Mónica Meireles



Ricardo Correia



Sandrina Moreira



Sofia Vale

### Research Assistants



António Rodrigues



Duarte Gonçalves



Hou Zheng

**Note:** The researcher left the unit in December 2019.

## Finance Research Group

**Coordinator: João Pedro Nunes**



### Integrated Members



Helena Isidro



João Pedro Nunes



José Carlos Dias



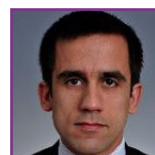
José P. Esperança



M<sup>a</sup> Helena Veiga



Mohamed Azzim



Pedro Prazeres

### Associated Members



Carlos Pinheiro



Igor Kravchenko



João Ruas



Luis Laureano



Luís Oliveira

### Research Assistants



João Reis

**Note:** The two researchers left the unit in May 2019 and in December 2019, respectively.



## Organizational Behavior & Human Resources Research Group

**Coordinator: Sílvia Silva**



### Integrated Members



Ana Passos



A. Patricia Duarte



Aristides Ferreira



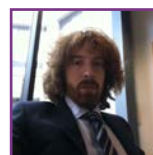
Donatella Marco



Francisco Nunes



Henrique Duarte



Mirko Antino



Sílvia Dello Russo



Sílvia Silva



Susana Santos



Susana Tavares

### Associated Members



António Caetano



Nelson Ramalho



Virgínia Trigo

### Research Assistants



Ana Sousa Guedes



Catarina Leal



Inês Sousa



M<sup>a</sup> Teresa Almeida



Sara Lopes



Tatiana Marques

## Visiting Researchers

In order to expand international collaborations during 2019, BRU-Iscte has received **9 visiting researchers from 9 international universities**, including 3 visiting scholars, 5 visiting PhD students, and 1 visiting student via the ERASMUS+ programme. Their involvement in the academic life of BRU-Iscte was directed towards scientific cooperation, teaching, research seminars and participation in the PhD programme.

It should be emphasised that in 2019 BRU-Iscte was visited by a **Fulbright Scholar**, Prof. Adrien Bouchet, for a period of 3 months.

### Professor Adrien Bouchet – The University of Tulsa, USA



Adrien Bouchet currently serves as the Warren Clinic Endowed Professor of Sport Management in the Collins College of Business. His articles have appeared in *Journal of Services Marketing*, *Developments in Marketing Science*, *Journal of Consumer Behavior*, *Journal of Sport Management*, *Sport Management Review*, *Sport Marketing Quarterly*, *Managerial Finance*, and *OMEGA - International Journal of Management Science*.

His paper from a Knight Commission of Intercollegiate Athletics grant was featured on *espn.com*. His 2015 article "*The role of reputation, status, and university endowment in increased athletic competition: evidence from NCAA division I*" won the best paper in the strategy track at the Southern Management Association. Bouchet is a NASSM Research Fellow and won the Collins College of Business Mayo Excellence in Research award in 2015.

During the 3 months he has stayed at BRU-Iscte Prof. Adrien has worked closely with researchers from the Marketing scientific area, in particular with Ana Brochado and José Pedro Dionísio.

## New Protocol with the Fulbright Foundation

On the 15th of October 2019, the Business Research Unit signed a new Cooperation Protocol with the Fulbright Commission, following the re-approval of the Fulbright Award in Management / Iscte, Business Research Unit (BRU-Iscte) for the academic years 2020/2021 until 2022/2023.



The Protocol was signed by Dr. Todd Miyahira and Dr. Otília Macedo Reis, respectively President of the Board and Executive Director of the Fulbright Commission, as well as by Prof. Maria das Dores Guerreiro and by Prof. Maria de Fátima Salgueiro, respectively Iscte-University Institute of Lisbon Vice-Rector for Internationalisation and BRU-Iscte Director.

Over the past 5 years, BRU-Iscte has hosted 6 Fulbright Scholars, which has resulted in multiple scientific collaborations and several publications.

## BRU-IUL Administrative Staff

### News from the staff

In 2019, **Andreia Garcia**, our Science Communication Manager and DBA Programme Manager, represented BRU-Iscte at the SciComPT- the 7th Congress of Science Communication.



BRU-Iscte's Research Assistant Manager, **Alessandro Segreto** participated as the representative of BRU-Iscte in the Final Meeting of the COST Action BESTPRAC European network of research administrators, held on September 5, 2019 at Ghent University, Belgium.

He contributed to the work of Working Group 1: Administration and gave a presentation on "*Research Funding and Communication Platforms: A pilot to optimize information flow within a research unit*". This presentation introduced the Intranet and other interactive tools (Office 365 apps such as Teams) being implemented within BRU to facilitate communication with researchers about funding opportunities and other relevant topics.





## BRU-Iscte | Scientific Programmes & Activities

### Funding Sources

In 2019, BRU-Iscte Research activities were ensured thanks to our funding sources (see table below), allowing for the attribution of several research fellowships, as well as for incentives to publication, financial support to research projects and applications for competitive funding.

2019	
<b>Fundação para a Ciência e a Tecnologia, I.P. - FCT</b>	<b>464.697,10 €</b>
R&D Unit Pluriannual funding	225.521,00 €
Project funding	111.609,68 €
Funding for contracts of researchers with PhD	37.543,00 €
Funding for PhD , PostDoc or other fellowships	90.023,42 €
<b>Other national sources</b>	<b>391.831,59 €</b>
Funding received from Participant or Management Institutions	253.188,21 €
Private funding	15.000,00 €
National public funding with EU funds	123.643,38 €
<b>International sources</b>	<b>87.202,00€</b>
Erasmus+ project funding	82.302,00€
Other European funding	4.900,00€
<b>TOTAL</b>	<b>943.730,69 €</b>

*Breakdown of BRU-Iscte's funding sources in 2019*

## Advanced Training

BRU-Iscte coordinates **3 PhD Programmes in Management, Finance and Economics**, the latter in collaboration with Iscte research centre DINÂMIA'CET. BRU-Iscte also runs a **Doctor of Business Administration (DBA) programme**, in collaboration with Chinese universities, accredited by the Chinese Ministry of Education.

Doctoral candidates enrolled in the PhD in Management can pursue one of **6 specialisations**:

- I. Accounting,
- II. Human Resources and Organizational Behavior,
- III. Marketing,
- V. Operations Management, Logistics and Supply Chain Management,
- V. Quantitative Methods Applied to Management,
- VI. Strategy and Entrepreneurship.

In 2019, **38 candidates** have graduated from one of the above doctoral programmes (12 from PhD Programmes and 26 from the DBA Programme), under the supervision of integrated or associated members of the Unit, thus increasing the merit and visibility of BRU-Iscte's advanced training and PhD programmes. Moreover, Unit's researchers have also supervised **2 theses** from PhD candidates from other Iscte doctoral programmes, as well as **3 theses** from other universities.

Furthermore, BRU-Iscte members have directly supervised **267 MSc theses and 57 MSc projects** defended in 2019.

## Research Fellowships

In 2019, BRU-Iscte has obtained funding for **5 new doctoral fellows, 2 post-doctoral fellows** and **2 MSc research fellows**.

FCT Fellowships			
Name	Type of FCT fellowship	Ref. nº	Supervisor
Ana Sousa Guedes Silva	BD (PhD Fellowship)	SFRH/BD/143584/2019	<b>Ana Passos</b>
Maria Beatriz Esperança	BD (PhD Fellowship)	SFRH/BD/144302/2019	<b>Aristides Ferreira</b>
Atieh Sadat Mirfakhar	Post-Doctoral Contract	PTDC/PSI-GER/29124/2017	<b>Silvia Dello Russo</b>
Jorge Fernando Pereira Sinval	BPD (Post-Doctoral Fellowship)	PTDC/MHCPSO/1044/2014	<b>Ana Passos</b>

Other Fellowships			
Name	Type of FCT fellowship	Ref. nº	Supervisor
Luís Casinhas	Merit Grant Iscte	N/A	<b>Alexandra Ferreira Lopes; Luís Filipe Martins</b>
Aihoor Kayoom Aleem	Merit Grant Iscte	N/A	<b>Sandra Loureiro</b>
João Victor dos Santos	Merit Grant Iscte	N/A	<b>Helena Isidro</b>
Alim Al Razy	BI (Research Grant)	POCI-01-0247-FEDER-02453	<b>João Vilas-Boas</b>
Sayed Vahid Mirnoori	BI (Research Grant)	POCI-01-0247-FEDER-02453	<b>João Vilas-Boas</b>

## Research Projects

### Empowering Researchers for Competitive Funding & Innovative Partnerships

One of the main efforts of BRU-Iscte's Directors and staff in 2019 was to diversify its funding sources, namely by encouraging the Unit's researchers to further engage in applications for competitive funding schemes and to further develop research partnerships with private and public organisations alike. As such, BRU-Iscte started its regular funding opportunities newsletter **Open Calls**, tailored to its scientific areas.

The Unit also organised an event on the 6th May 2019 with the theme "**Empowering Researchers for Competitive Funding & Innovative Partnerships**". The main objective of this event was to provide researchers with valuable information on the upcoming funding opportunities, on existing support mechanisms for applications by Portuguese researchers, on how to write a grant application and on how to establish partnerships. The event counted with the participation of representatives of ANI (the Portuguese Innovation Agency), EEN – European Enterprise Network, AUDAX, Alumni Iscte. This event also hosted as guest speaker Ellen Schenk, from the Research Office at Erasmus MC University (Rotterdam, The Netherlands), who talked about "The Art of Writing", a lecture on how to write applications for competitive grants.

### BRU-Iscte wins Portugal 2020 support for internationalisation

The Business Research Unit was successful in its application for Portugal 2020 support to submit Horizon 2020 project proposals in 2019 and 2020. The application "BRU-HORIZON 2020: Raising the International Profile and Scalability of BRU-Iscte's Research Activities" has allowed the research unit to support its researchers' internationalisation efforts to build international consortia and draft applications for H2020 competitive funding.



### 3 new Erasmus + projects in Organizational Behavior & Human Resources

#### DeSTRESS



BRU-Iscte researcher **Sílvia Silva** is coordinating the Erasmus+ project "*DeSTRESS - Developing Competences for Stress Resilience @SMEs*", leading a European consortium of 7 partners from 6 countries: Greece, Ireland, Italy, Portugal, Poland and Spain. DeSTRESS was one of the few selected projects from the Portuguese Erasmus+ Agency in the call Key Action 2 – Strategic Partnerships for Vocational Education and Training (VET).



**Henrique Duarte** is also part of the coordinating team, while BRU researcher, **Donatella Di Marco**, integrates the project as member of the Spanish team (University of Seville).



The project aims to provide an innovative VET-based solution to prevent and manage work-related psychosocial risks and musculoskeletal disorders. Building on existing research, partners will identify a required set of competences leading to the development of a VET curriculum and a new VET Digital Training Platform using the latest techniques in game-based training and gamification complemented by a set of practical tools and resources to facilitate the transfer of learning into the workplace.

## WELly

**Sílvia Silva** is also a partner in another Erasmus + project, “*WELly: Introducing the job profile of a Manager for Work Well-being to prevent and combat work related stress*”, coordinated by the Faculty of Organisation Studies - University of Novo Mesto in Slovenia. Indeed, WELly was the first ranked project by the Slovenian Erasmus+ Agency for the call Key Action 2 – Strategic Partnerships for Vocational Education and Training (VET). BRU-Iscte integrates a consortium of 8 partners from 5 countries: Greece, Italy, Portugal, Slovenia and Spain.



Given the exponential increase of work-related stress issues and the diffusion of depression among European citizens, the WELly project aims to set the role of Work Well-being Manager (WWM) in charge of making sure that daily working conditions are fair, and as healthy as reasonably possible for every employee, so that the overall quality of life at work improves within the organisation and across economies.

## BeComE

Another project with BRU participation was approved in 2019, although funding will only start in January 2020. This project is an Erasmus+ Knowledge Alliance, led by the Tallinn University of Technology (TALTECH), called “BeComE - Be Competent in Entrepreneurship: Knowledge Alliances for Developing Entrepreneurship Competencies for the Benefit of Higher Education and Business”. This Knowledge Alliance includes a consortium of 14 partners (universities and SMEs or start-ups) from 5 countries: Estonia, Finland, Italy, Portugal and Poland. From BRU, researchers **Susana Tavares and António Caetano** were involved in the application.



The idea of the project is to excel entrepreneurship education in higher education by creating effective knowledge alliances (KA) between higher education institutions and businesses. It is focused on developing students' entrepreneurship competencies to meet the labour market expectations towards professional competencies of employees and entrepreneurs, taking into account the macro-level developments such as globalization, technological advancements and demographic shifts.

## COST Action “CHERN – China in Europe Research Network”

The Business Research Unit researcher **Rui Vinhas da Silva**, from the Accounting, Marketing and Management Group, was nominated to the Management Committee of the new COST Action “CHERN – China in Europe Research Network”. In addition to being the Portuguese representative in the Management Committee of CHERN, Rui Vinhas da Silva also joined the Action's Working Group 1: Strategic actors and infrastructure development. This COST action started on the 8<sup>th</sup> of November 2019 and it will end on 7<sup>th</sup> November 2023.



## Other Research Partnerships



In 2019, BRU-Iscte researcher **Fernando Ferreira**, from the Accounting, Marketing and Management Group, participated in the OSIRIS project, a 2.381 million euros EU-funded project (INTERREG Baltic Sea Programme), which supports the smart specialization approach in the silver economy. The researcher was invited to provide its expert services on regional knowledge maps, knowledge management model and open innovation toolkit.

**Aristides Ferreira**, researcher from the Organizational Behavior & Human Resources research group, has started participating in the project “Digital Talent Ecosystem”, led by Novabase Neotalent, SA, with the support of Portugal 2020 funds.



BRU-Iscte researcher **Raúl Laureano**, from the Data Analytics research group, has been participating in a national project to use artificial intelligence to reduce red tape and the time entrepreneurs wait to obtain European funds. This project is led by IAPMEI (the Portuguese Agency for Competitiveness and Innovation) and by AICEP (the Portuguese Agency for Investment and Foreign Trade) and counts with the support of 300 000€ from Portugal 2020

funds, via the COMPETE 2020 Programme, and specifically the fund for the digital transformation of the Portuguese administration (SAMA). Iscte is the scientific and technical partner of the project, with the participation of researchers from 3 research units: DINÂMIA, ISTAR and BRU.

**Elizabeth Reis** and **Paula Vicente**, from the Data Analytics Group, led a study on oral health in early 2019 in partnership with SCML (Santa Casa Misericórdia de Lisboa). This study concerned the adherence of Lisbon's resident population to the free oral health service for children and under-18 youths.



## Funded research projects in 2019

In 2019, BRU-Iscte researchers were coordinating or participating in 15 projects (including 6 FCT projects, 2 PT2020 projects, 3 EU projects and 1 international project).

Ongoing projects coordinated by BRU-Iscte researchers		
Reference	Project Title	Principal Investigator
PTDC/IMM-FIN/7188/2014 (FCT)	Managerial pay in banks and the financial crisis	<b>Mohamed Azzim Gulamhussen</b>
PTDC/MAT-ANA/1275/2014 (FCT)	Global properties of solutions of the Einstein equations	<b>João Costa</b>
PTDC/MHC-PSO/1044/2014 (FCT)	Team cognition, adaptation and multiteam systems in dynamic environments	<b>Ana Passos</b>
PTDC/PSI-GER/2914/2017 (FCT)	R.E.A.L. P.A.L – Relationships, Exchanges And Leadership: implications for Performance Appraisal	<b>Silvia Dello Russo</b>
2019-1-PT01-KA202-060771 (Erasmus+)	DeSTRESS - Developing Competences for Stress Resilience @SMEs	<b>Sílvia Silva</b>
LISBOA-01-0145-FE- DER-042820 (PT2020)	BRU-HORIZON 2020: Raising the International Profile and Scalability of BRU-IUL's Research Activities	<b>Maria de Fátima Salgueiro</b>
Internal funding from Iscte	HOPE – Healthcare: Optimize, Predict and Explain	<b>Raul Laureano</b>
Internal funding from Iscte	DAFIM – Desenvolvimento de Algoritmos de Detecção de Padrões de Fraude na Verificação de Incentivos	<b>Raul Laureano</b>
Internal funding from Iscte	WanD - Waning the Burden of Dementia: Costs, Data Fusion and Quality of Life	<b>Elizabeth Reis</b>

*Funded research projects in 2019 (coordinated by BRU-Iscte researchers)*

Ongoing projects coordinated by other organisations with the participation of BRU-Iscte researchers		
Reference	Project Title	BRU-Iscte Local Project Coordinator
PTDC/IMM-GES/3501/2014 (FCT)	The Emergence and Consequences of Collective Psychological Ownership in Teams	<b>Ana Passos</b>
PTDC/IIM-GES/2686/2014 (FCT)	Financial institutions' disclosures in times of crisis	<b>Helena Isidro</b>
PSI2015-64894-P (Ministerio de Economía y Competitividad - Programa Estatal de Fomento de la Investigación Científica y Técnica de Excelencia)	Mediación ante conflictos de discriminación social en el lugar de trabajo	<b>Donatella Di Marco</b>
POCI-01-0247-FE- DER-02453 (PT2020)	Inovstone 4.0 – Advanced Technologies and Software for Natural Stone	<b>João Vilas Boas</b>
2019-1-SI01-KA202-06039 (Erasmus+)	WELLY: Introducing the job profile of a Manager for Work Well-being to prevent and combat work related stress	<b>Sílvia Silva</b>
CA18215 (COST Action)	CHERN – China in Europe Research Network	<b>Rui Vinhas da Silva</b>

*Funded research projects in 2019  
(with the participation of BRU-Iscte researchers)*



## Publications, Awards & Editorial Positions

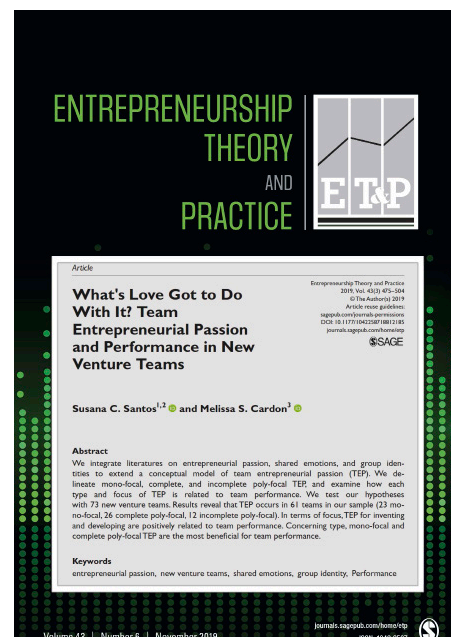
Following the established criteria of academic excellence, in 2019, BRU-Iscte researchers have published **165 research papers in indexed international peer review journals** and 10 research papers in other journals. Additionally, BRU-Iscte's researchers held **68 positions as editors and members of editorial boards** of scientific journals in 2019; the Unit's researchers were also involved in reviewing for 169 journals.

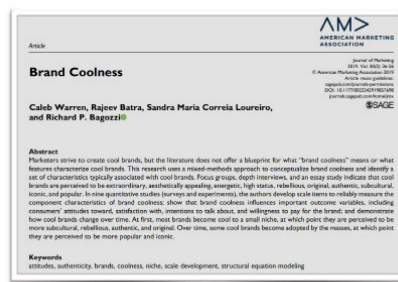
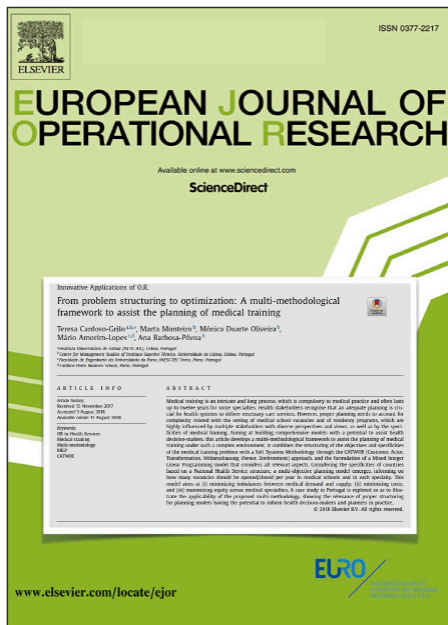
Moreover, BRU-Iscte researchers had a productive year in 2019 regarding their **communications in national (19) and international conferences (190)**. These communications resulted in **79 peer-reviewed proceedings**. Also, the Unit's researchers were responsible for other types of publications in 2019: **books (9), book chapters (30) and book editions**

### Top BRU-Iscte Publications in 2019

From the 165 articles published by BRU-Iscte researchers in indexed international peer-review journals, 18 were ranked ABS3, 5 ABS4, 3 ABS 4\* and 4 FT50. Moreover, 40 were published in Web of Science Q1 journals and 87 in Scimago Q1 journals.

From these, we highlight the **8 top publications** ranked **ABS 4\* / 4** or **FT50**.





## Scientific Awards

**60 BRU-Iscte researchers** were awarded the Iscte Scientific Awards for Scientific Publications at the 2019 Scientific Awards Ceremony that took place on the 28th November. These **60** awarded researchers published a total of **120 different papers**, indexed in Quartiles 1 and 2 in the Web of Science and in the Scimago Journal Ranking.



Additionally, in 2019, BRU-Iscte's researchers have received **11 other international or external scientific awards**, including **2 reviewing awards** and **6 best papers awards**, including:

- Outstanding Paper in the 2019 Emerald Literati Awards for researcher **Arménio Rego**;
- 2019 Kauffman Foundation Award for Best Paper in Gender and Diversity and Entrepreneurship (by the GDO Division of the Academy of Management) for researcher **Susana Santos**;
- Best Conference Paper Award at the 2019 Global Fashion Management GAMMA for researchers **Sandra Loureiro, João Guerreiro and Ricardo Billo**.

Also, **Ana Isabel Lopes** received the prestigious accounting award “Luiz Chaves de Almeida”, awarded by APOTEC.

## Research Seminars Series

The Research Seminar Series provides an outlet for the formal presentation and intensive discussion of recent research by international high-profile scholars with faculty, researchers and students on a regular basis. In 2019, BRU-Iscte organised **24 research seminars** with guest speakers from 10 international universities, 13 from national universities (including 7 Iscte faculty), and 1 from the Migrations Observatory.



Presenter: *Stefan Nickel,*  
*Karlsruhe Institute of Technology*



Presenter: *Niamh Brennan,*  
*University College Dublin*





## 29th EBES Conference



BRU-Iscte researcher **Sofia Vale**, from the Economics group, was part of the Scientific Committee that organised the 29th Conference of the Eurasian Business and Economics Society, which took place at Iscte between 10-12 October 2019. The event gathered **548 participants from 52 countries**, and **311 papers** were presented as oral communications.

The Keynote Session was presented by Amine Tarazi (University of Limoges, France) discussing *“On the Interaction of*

*Bank Liquidity and Capital”* and by Robert William Vivian & Christo Auret (University of the Witwatersrand, South Africa) discussing *“The Omitted History of Portfolio Theory”*.



## 14<sup>th</sup> Annual INGroup Conference

The 14<sup>th</sup> annual conference of the INGroup (Interdisciplinary Network for Group Research) was held in Iscte between 17-20 July 2019, with BRU-Iscte researcher, **Ana Passos**, serving as the Local Arrangements Chair. The post-doctoral fellow Jorge Sinval also assisted with the local organisation.

The event gathered **273 participants from 20 countries**, with the USA (161 delegates), Germany (25 delegates), The Netherlands (18 delegates) and Canada (10 delegates) being the most represented nations. In total, there were 6 symposia, 127 oral communications and 36 posters. This 2019 conference counted with the Keynote Lecture by the 2018 McGrath Award Winner, Prof. Dr. Linda Argote, on *“Group Processes in Organizations: Continuity and Change”*.





## National Meetings

### VI Congresso Nacional da Formação Profissional (VI National Congress on Professional Training)

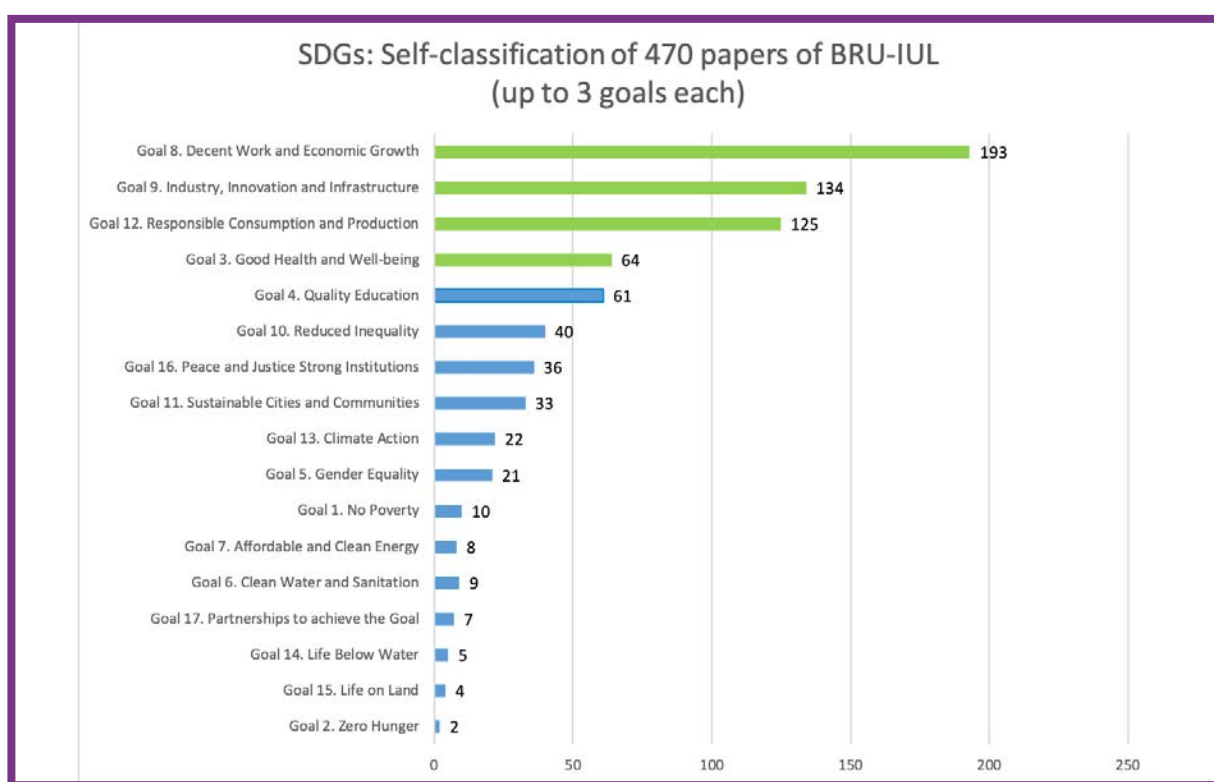
This congress, held at Iscte in April 2019, and involving 500 participants, was a joint initiative of Forma-te, Iscte, McDonald's and TAP Portugal. The 2019 theme was "*Pensar a Formação: Era Digital e Humanismo*" (Thinking training : Digital Era and Humanism). **Andreia Garcia** of BRU-Iscte was part of the event's organising committee. BRU-iscte vice-director **Jonas Oliveira** represented the unit in the Opening Ceremony.



## Research Impact and Alignment with the Sustainable Development Goals (SDGs)

BRU-Iscte continues to be very involved in Iscte efforts to promote and contribute to the SDGs. Taking advantage of the new possibilities made available by Iscte information systems, we have encouraged our researchers to identify the relevant SDGs (up to 3 goals per contribution) to each of their research outputs over the past 5 years.

As of November 2019, BRU-Iscte researchers have listed **470 publications and 11 projects** as contributing to specific Sustainable Development Goals, as follows:



*Contribution of BRU-Iscte research publications to the SDGs for the period 2013-2019*

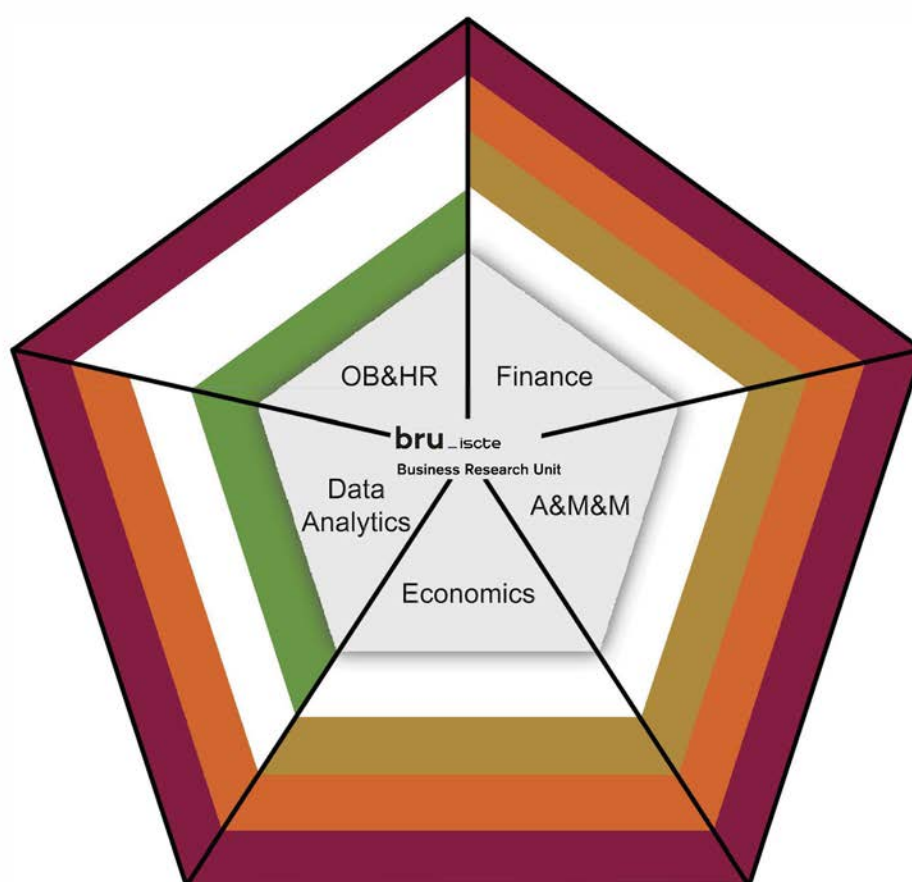
Hence, the declared research outputs are mostly aligned with:

- **SDG 8 - Decent Work and Economic Growth** with 193 publications and 9 projects
- **SDG 9 – Industry, Innovation and Infrastructure** with 134 publications and 1 project
- **SDG 12 – Responsible Consumption and Production** with 125 publications, and 1 project
- **SDG 3 – Good Health and Well-being** with 64 publications and 5 projects
- **SDG 4 – Quality Education**, which emerged in 2019 as one of the main SDGs to which BRU's research is most committed to, with 61 publications



# SUSTAINABLE DEVELOPMENT GOALS

Also, in the last quarter of 2019, BRU-Iscte started analysing trends of **multidisciplinary** and **interdisciplinary research** within its 5 research groups, based on the work being done by each of them towards the delivery of each SDG.



*Multidisciplinary and interdisciplinary research with 5 research groups of BRU-Iscte*

BRU-Iscte is committed to build on its interdisciplinary potential by exploring research trends relating to SDGs in each research group and invest on transversal thematic research lines based on SDGs.

## Overview of Scientific Outcomes

Indicators	Total
<b>Publications</b>	
Books	43
Research papers in international peer review journals	165
Research papers in other peer review journals	10
Peer-review Proceedings	79
<b>Communications</b>	
National conferences	19
International conferences	190
<b>Organisation of Seminars and Conferences</b>	
Research Seminars	24
National conferences (includes participation in programme committees)	19
International conferences (includes participation in programme committees)	48
<b>Advanced Education</b>	
PhD Theses	43
MSc Theses	324

*Summary of BRU-Iscte scientific outcomes in 2019*

## BRU-Iscte | Dissemination, Knowledge Transfer & Outreach

BRU-Iscte strives to translate its scientific results to practitioners, influence policy-making, and contribute to the adoption of evidence-based practices at the local, national or international administration levels. Its investigators provide research-based consulting services that can help improving managerial practices of third sector organisations, public entities, SMEs and large organisations, both nationally and internationally. Indeed, our researchers are very keen on knowledge transfer to the wider community via a permanent effort to disseminate ideas to society.

In 2019, BRU-Iscte researchers carried out some **132 activities in terms of dissemination, knowledge transfer and outreach**, in order to make research accomplishments more visible to the scientific community, to professionals from the non-academic sector, to public officials as well as to the public at large.

### Dissemination of scientific activity & knowledge transfer

In 2019, BRU-Iscte members have been responsible for **30 activities of dissemination of scientific knowledge** (conferences, seminars, workshops, communications) to non-academic professionals and other stakeholders. Moreover, our researchers were involved in **39 executive training activities, 2 summer schools, 15 positions in expert, scientific or technical committees, 13 licensed research (consultancy)**, and produced **1 knowledge valorisation product** (Android App).

Here are some highlights of these dissemination and knowledge transfer activities:

#### Executive Education & Summer Schools

BRU-Iscte researchers **Catarina Roseta Palma** and **Ana Simaens** were involved in the organisation of the BOOST Programme on Sustainability Management, an executive education programme delivered by INDEG, Iscte's spin-off for Executive Education.



The Economics Group researchers **Mónica Meireles** and **Thomas Greve** were involved in the organisation of the 2019 Summer school "Energy and Environmental Economics", organised by Iscte Business School (IBS).

Whilst, **Ana Lúcia Martins**, researcher from the Accounting, Marketing & Management Group, was responsible for the organisation of the 2019 Iscte's Summer School on "Humanitarian Action".





## Licensed Research & Consultancy

**Nelson Ramalho**, from the Organizational Behavior & Human Resources Group, proposed a project to identify the representations and attitudes of SBSI (Sindicato dos Bancários do Sul e Ilhas) retirees from banking industry in Portugal, by using a national representative sample of over 3500 participants. It reported on life conditions, social support, daily habits, financial situation, health and healthcare access and satisfaction, role and relationship with unions, as well as expectations regarding banking industry and banking trade unions. It offers a comprehensive view of this population needs, aspirations and voice in addressing the wellbeing of current and retired bank workforce. This project was carried via Audax, Iscte's Entrepreneurship Centre.



**Sofia Kalakou**, from the Accounting, Marketing & Management Group, collaborated with the H2020 project TInnGO with her expert services, contributing to the project with the analysis and modelling of women's mobility within Europe.

**Paula Vicente**, from the Data Analytics Group, was member of the Sondagens ICS/ISCTE team, a joint project on election polls, in collaboration with the media group Impresa Publishing, SA.

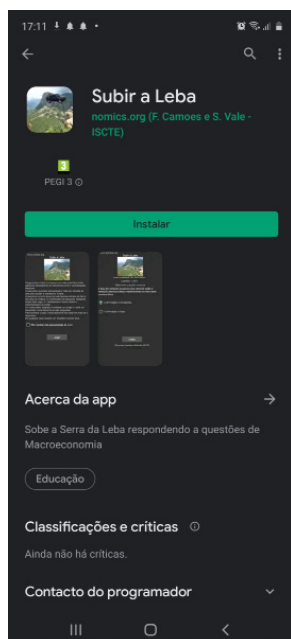


## Expertise in Technical and Scientific Committees

In recognition of their scientific outputs, several BRU-Iscte researchers have been invited to provide expertise in various technical and scientific committees. In 2019, we highlight the participation of:

- **Alexandra Ferreira Lopes**, from the Economics Group, as Expert Survey Portugal for IFO Institute World Economic Survey;
- **Ana Simaens**, from the Accounting, Marketing & Management Group, as an expert in the technical subcommittee CT 164 "Circular Economy – Social Responsibility";
- **Maria Antónia de Jesus**, from the Accounting, Marketing & Management Group, as an expert in UniLeo – the parliamentary unit on the implementation of the framework budgetary law.

## Scientific Dissemination Activities



The Economics Group researcher **Sofia Vale** contributed to the development of an Android App “Subir a Leba”, a fun game to learn and revise introductory concepts of macroeconomics and national accounting.

On the 14th February 2019, BRU-Iscte researcher **Catarina Roseta Palma**, participated in a round table “*A multifuncionalidade das linhas de água em espaço agrícola: Benefícios económicos, sociais e ambientais* (The multi-purpose of water lines in agricultural space: economic, social and environmental benefits)” for non-academic professionals at a seminar promoted by EDIA (Empresa De Desenvolvimento e Infraestruturas do Alqueva SA) in Beja on the topic of “Requalification of water lines in agricultural exploitation”.



From December 2018 to June 2019, Iscte organised its 1<sup>st</sup> International Conference Cycle on Humanitarian Action, under the scientific coordination of BRU-Iscte researcher **Ana Lúcia Martins**. This 1<sup>st</sup> cycle comprised 13 conferences with renown national and international experts. In parallel, a website on Humanitarian Action was also kept to date by

said researcher, providing general information on the topic, the conference cycle, as well as Iscte’s post-graduate programme and summer school on Humanitarian Action.

## BRU-Iscte in the Media

In 2019, BRU-Iscte researchers have made **24 communications** in the media (written press, radio and television).

In January, BRU-Iscte researcher **José Arménio Rego** disseminated the results of his study on "*Bons líderes são dotados de “fibra” – e apoiam os liderados* (Good leaders have ‘grit’ - and they support those they lead)" in Líder Magazine.

In the midst of the humanitarian crisis in Mozambique, due to cyclone Idai and hurricane Kenneth, BRU-Iscte researcher **Ana Lúcia Martins** gave interviews to radio station TSF and tv news programme 360°, on RTP3 channel, commenting on the coordination of humanitarian action deployed in the African country.

In July and August, researcher **Sandra Loureiro** promoted with her co-authors their latest publication on "Brand Coolness" (published in the Journal of Marketing, a ABS 4\* and FT50 ranked journal) in specialised media, with the results being picked up by outlets such as the American Marketing Association's website and Footwear News.

## Engaging with the public at large

In 2019, BRU-Iscte researchers have carried **8 outreach activities** specifically geared towards the education of civil society and the public at large, on the scientific topics covered by the Unit.

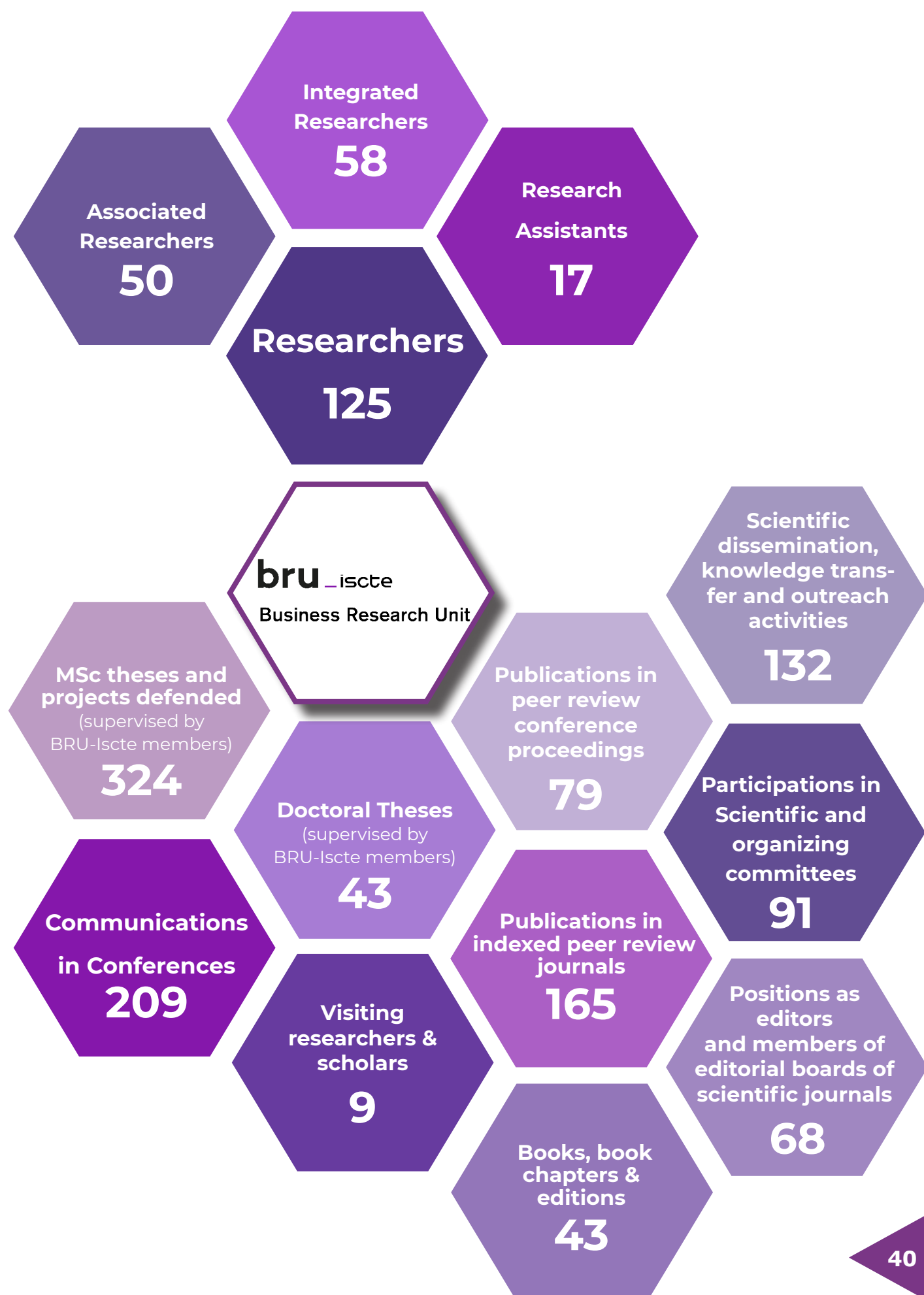


Researchers **Ana Patrícia Duarte** and **Catarina Roseta Palma** represented BRU-Iscte at the National Science Summit 2019, with presentations on "Organizational Sustainable norms as determinants of pro environmental behaviors at work" and "Managing water: technology, economics and nature", respectively. This event took place on 8-10th July, with the United Kingdom being the guest country of the 2019 edition.

On the 5<sup>th</sup> December, BRU-Iscte researcher **Hélia Pereira** participated in the public presentation of the study “Characterization of Local Lodging Establishments in the Algarve region”, a joint initiative of the QUALITY Programme of AHRESP and Iscte, with the support of Turismo de Portugal (Tourism Portugal).



## BRU-Iscte | Key Figures 2019





## BRU-Iscte | Appendices